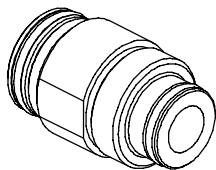


This instruction sheet describes the replacement of the gas check valve on a SureFoam foam dispensing system.

**WARNING:** Risk of personal injury or equipment damage! Refer to the safety information provided in the melter manual before servicing the melter. Failure to comply with the safety information provided can result in personal injury, including death.

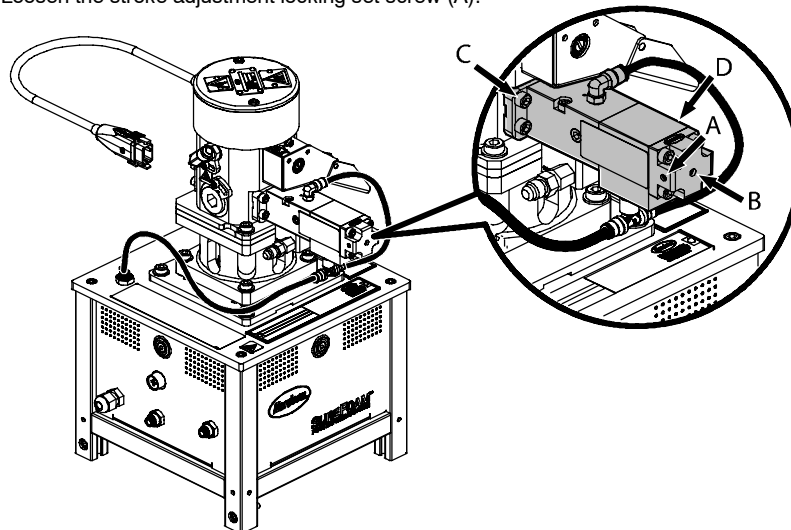
### Required Tools:

Open-end wrench set  
Hex key set with torque gauge

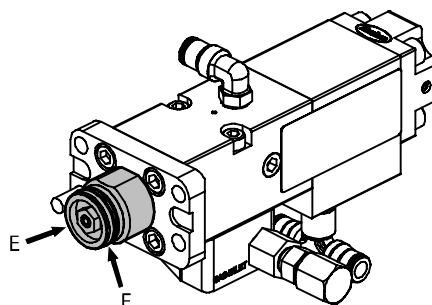


Gas check valve

1. Bring the unit up to 350° F.
2. Loosen the stroke adjustment locking set screw (A).



3. Turn the stroke adjustment screw (B) two turns counterclockwise.
4. Detach the gas valve assembly (D) from the mixer by removing the four bolts (C). Wipe molten adhesive.
5. Using an open-end wrench on the flats of the gas check valve (E), unscrew and remove the valve.



**CAUTION:** In step 6 do not lubricate the o-ring on the end of the new gas check valve that extends inside the gas valve assembly

6. Lubricate the exterior o-ring (F) on the new gas check valve, and then install the new valve into the gas valve assembly. Tighten snugly.
7. Remount the gas valve assembly onto the mixer assembly. Tighten the four mounting bolts to 7-10 Ft. Lbs.
8. With the unit at 350° F, slowly turn the stroke adjustment screw (B) clockwise until it just stops, and then turn it counterclockwise  $\frac{1}{2}$  to 1 turn.  
**NOTE:** The stroke adjustment screw is not a means to adjust the gas flow. It simply sets the needle valve stroke.
9. Tighten the stroke adjustment set screw (A).
10. Operate the unit normally to confirm correct foam density.